



Cruiser Log

The Newsletter of the North American Cruiser Association

Volume 13, Issue 5

December 2013

North American Invitational 2013

Tacoma Yacht Club was host and home base for this year's premier cruiser navigation contest held during the week of October 2, 2013. The annual North American Invitational, sponsored by the North American Cruiser Association, brings together the best competitors in the sport from around the nation. This year, the members of the International Powerboat Association took their turn at organizing and operating the event. Commodore Long of Tacoma Yacht Club was kind enough to offer the support of his bridge and the excellent facilities of their yacht club to the event. Ten competitors, representing cruiser navigation associations from as far away as St. Petersburg, Florida, and Chicago, Illinois, joined in competition with opponents from California and Washington.

The four-day event started with a "boat draw" dinner at nearby Totem Yacht Club. In home waters, competitors use their own boats, but in these championship competitions, drawing people from other regions, no one uses their own boat. Consequently, the organizers get local captains to bring their boats to the competition. Boat names are drawn during the evening, and the competitors and boat captains have a

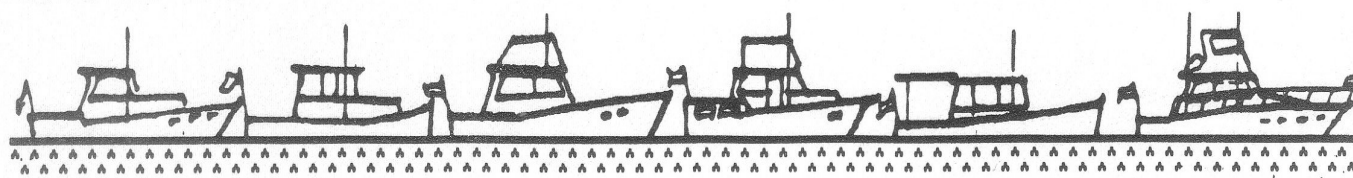
chance to get acquainted. The next day, Thursday, each team ventured out on the waters of Commencement Bay to run the measured mile and develop a speed profile, turning circle information, and handling characteristics of the boat they had drawn. With that information in hand, the teams used Friday to complete the final details of how they were to run the course.

Inside This Issue:

<i>Who's Who in NACA</i>	2
<i>NACA Objectives</i>	2
<i>Cruiser Log Deadlines</i>	2
<i>2014 NACA Beidge</i>	3
<i>New Ship's Store</i>	3
<i>Future NAI Events</i>	3
<i>From the Editor</i>	3
<i>19th Century Meals</i>	4
<i>NAI, According to Jeff</i>	5
<i>NACA Standings</i>	7
<i>NACA Application</i>	11

This year, the route started off the flagpole at Tacoma Yacht Club and proceeded southeast to the grain dock and back northwest to Brown's Point Light. It dipped into the mouth of Quartermaster Harbor and rounded into Dalco Passage, past the Tahlequah ferry terminal and northbound in Colvos Passage. Turning back south along the western shore, the boats proceeded past the Narrows Bridge and turned north again to round Point Defiance and finish near the yacht club. The weather in the days preceding the gathering in Tacoma was filled with wind, rain, and thunderstorms, but by the boat trials on Thursday, things were looking good with calm water and sunshine. However, as we all know, fair weather in September and October brings morning fog. So, the contest committee was challenged to come up with a plan that would

(Continued on page 4)



North American Cruiser Association

For help or information, visit our web site at
<http://www.predictedlog.org>

The site provides a resource for boaters looking for information, to learn more about predicted logging or NACA, or to find a nearby member organization.

Feel free to call any of us with your thoughts and ideas!

Commodore

John Vignocchi (h) 847.295.7091
 (w) 773.380.0700
 E-Mail: johnv@johnkeno.com

Vice Commodore

Fay Baynard (h) 727.823.3035
 (w) 727.580.1653
 E-Mail: fbaynard@tampabay.rr.com

Rear Commodore

Scott Strandjord (h) 425.449.8445
 (b) 206.819.9732
 E-Mail: scott.strandjord@gmail.com

Secretary/Treasurer

Ken Griffing (h) 626.333.0513
 E-Mail: kgriffing@earthlink.net

Jr. Staff Commodore

Jeff Calabrese (h) 619.656.8036
 E-Mail: jeff5250@sbcglobal.net

Chairman of the Board

Tom Collins (h) 818.363.6292
 E-Mail: admiral@ktb.net

2013 Directors at Large

Marty Muir	SDCA
Maurice McGough	SPYC
Lloyd Sergent	CYC
Clint Chapman	IPBA

Chief Scorer

Bob Lindal (h) 206.325.4508
 E-mail: BobL@lindal.com

Cruiser Log Editor/Publisher

Elaine Townsend (h) 619.691.0449
 E-mail: thepresence98@yahoo.com

Website Manager

Jeff Calabrese (h) 619.656.8056
 E-mail: jeff5250@sbcglobal.net

NACA Objectives

The objective of the North American Cruiser Association is to promote the sport of Predicted Log Contests in North America. Pursuant to this objective, NACA will:

1. Publish and distribute a periodic newsletter known as *Cruiser Log*, which shall contain news and information pertaining to the sport.
2. Schedule and coordinate an annual "North American Invitational" (NAI) Predicted Log Contest.
3. Sanction contests of member associations that are to be scored for NACA points.
4. Maintain and publish scoring and standings of Predicted Log contestants participating in NACA sanctioned contests.
5. Provide perpetual and suitable keeper trophies and other awards for winners of such North American Predicted Log series and events as may be established by NACA.
6. Establish "Recommended Contest Rules" for NACA sanctioned Predicted Log Contests.
7. Generally be responsive to the needs and requirements of member associations and of the sport of Predicted Log Contests.
8. Support boating and Corinthian yachting in general.

Cruiser Log Publication Deadlines

Submit by:	For publication in:
January 15	February
March 15	April
May 15	June
July 15	August
September 15	October
November 15	December

If you miss a deadline, your article will be published in a future issue.

2014 NACA Bridge

At the North American Cruiser Association annual membership meeting held at Chicago Yacht Club on October 3, 2013, the following members were unanimously elected to the 2014 NACA bridge:

Commodore: Fay Baynard - SPYC
Vice Commodore: Scott Strandjord - IPBA
Rear Commodore: Ken Griffing - SCCA
Secretary/Treasurer: Ed Kutchma - SBCCA*
Jr. Staff Commodore: John Vignocchi - CYC

Directors at Large:

Steve Hazelrig - IPBA
 Bill Mc Cormick - SCCA
 Lloyd Karzen - CYC
 Jan Lawson - SBCCA*

*Santa Barbara Channel Cruiser Association, new member of NACA

New Ship's Store

The North American Cruiser Association Ship's Store is now up and running via the NACA website (www.predictedlog.org). NACA has teamed up with Lands' End, and quality NACA logo wear is available.

When in doubt, do something.
 - Harry Chapin, Musician

FUTURE NAI EVENTS

2014—San Diego, CA (09/10-13/14)
 2015—IPBA/North (10/03/15)*
 2016—SCCA (08/06/16)*
 2017—St. Petersburg, FL (10/21/17)*

*Tentative dates

From the Editor

Many thanks go to Tom Collins, who did an excellent job as temporary editor of *Cruiser Log*, while I was travelling for five and a half months earlier this year.

During my time in Wellington, New Zealand, it was my honor and pleasure to meet International Order of the Blue Gavel/New Zealand Staff Commodore Chris McCallum. He extended the warmest welcome to me that I've ever encountered in all my travels. And I had never even met him before!

Chris took me to each of the five yacht clubs in Wellington, in addition to Mana Cruising Club, where he docks his beautifully restored boat *Tangaroa*, and on an all-encompassing sightseeing tour from one end of Wellington to the other.

One of the highlights of my visit was the annual blessing of the fleet in Island Bay, a coastal suburb of Wellington. From his friend Neville Robinson's home overlooking the bay, we had a magnificent view. A group of clergy was on a fishing boat moored in the middle of the bay and anointed a procession of more than thirty passing commercial fishing boats and recreational boats with prayer and holy water. The tradition originated centuries ago in Italy and around the Mediterranean and was brought to Wellington when Italian fishermen began migrating to Island Bay in the 1890s.

Chris and his lovely wife Lorna completed my visit with a delicious dinner at a restaurant overlooking Days Bay in Eastbourne. I hope someday I can return the warm hospitality that was shown to me.

Elaine Townsend
 Editor/Publisher

Only the guy who isn't rowing
 has time to rock the boat.
 - Jean-Paul Sartre

North American Invitational 2013 (Continued from page 1)

allow the competition to be completed in a reasonable time on Saturday. The 33-mile course was shortened to about twenty-one miles, and the start was moved to the vicinity of the Telequah ferry terminal. Even with the delay, the first boats to start had to deal with limited visibility. But, as so often happens, the fog dissipated within minutes, exposing a beautiful day and a clear course for everyone. The currents, however, were not so benevolent, and the complicated flow of tidal waters in and around the Tacoma Narrows proved a challenge to everyone.

This course included some challenging special events. One was to do a transit from a pier near Sunrise Beach to the light at Gig Harbor in exactly nineteen minutes. The best performance on that leg was by Ed Kuchma, who managed to do it in nineteen minutes and thirteen seconds.

The second extraordinary event was to proceed to a given point south of the narrows bridge, take the way off your boat, and drift for five minutes. Then proceed northbound and complete the course. Both events proved very challenging and resulted in a wide range of comments to and about the race master. Remember that in cruiser navigation contests competitors do not have access to time of day. Under some circumstances, such as the five-minute drift, they do have access to stopwatch.

The results were exceptional. Especially for the out-of-towners. In third place, from Southern California Cruiser Association, was Tom Collins and his navigator Ken Griffing, with a score of 1.13% error. In second place, from Chicago Yacht Club, were Robert Hough and John Vignocci, with a score of 1.09% error. Taking top honors, from San Diego Cruiser Association, was Dave Weimer and his assistant Jeff Calabrese, with a score of 0.98% error. The best showing from the International Power Boat Association was last year's champion Scott Strandjord of Seattle Yacht Club, who came in fourth. Cruiser navigation competition generates a

fraternity of boaters. At this year's North American Invitational, we were pleased to be joined by Chip Hanauer to record a segment on predicted logging for his blog, theboatguy.com. Please watch for it to get a feel for the sport and how it fits into the boating lifestyle. For more information about this great sport, go to our website, ipbalogracing.org or contact me, Bill Anderson, at bigbillasr@earthlink.net. I would love to hear from you!

Bill Anderson

International Powerboat Association



2014 NACA Officers: Rear Commodore Ken Griffing, Jr. Staff Commodore John Vignocci, Commodore Fay Baynard, Secretary/Treasurer Ed Kutchma, and Vice Commodore Scott Strandjord

19th Century Meals

It is impossible to appreciate the value of fresh food on shipboard. The usual fare is hard baked biscuit, called by the sailors, hard-tack, baked very hard to prevent moulding, and beef as salty as salt itself to keep it from spoiling, named in sea language, salt-junk and salt-horse, with duff or pie for dessert.

- Meals aboard a sailing vessel bound for the California goldfields in the mid-19th century, according to Richard L. Hale, a passenger.

North American Invitational 2013, According to Jeff Calabrese

The North American Invitational (NAI) 2013 in Tacoma, Washington, turned out to be a dandy event. My duties as junior staff commodore brought me there, but, as an added bonus, I got to crew (helmsman) for my good friend, David Weimer.

Dave and I have been chasing rainbows for several years, but I had a good feeling about this one, and my horoscope forecast "...big things..." on race day.

I landed at SEATAC Airport on Tuesday and grabbed a limo to Tacoma. The older Cadillac had the "check engine" light on, and I asked the Somalian driver if the car would make it to Tacoma. After listening to his life story, we finally pulled up to the Silver Cloud Inn. The inn turned out to be a "sweet deal". NAI attendees had reduced rates, lots of extras, and all the rooms had great views of Commonwealth Bay and the southern Puget Sound.

Typically, the NACA bridge has a little get-together on Tuesday evening, and this one was no exception. There were plenty of snacks and drinks to go around in our hospitality room. The inn also hosts a social hour with heavy hors d'oeuvres on Tuesday evenings to add to our fun. It was great to see the old hands. Many good sea stories were told, and much fun was had by all.

The NACA bridge met at Tacoma Yacht Club (TYC) for its annual face-to-face meeting on Wednesday morning. Other meetings throughout the year are done via telephone conference. Talk about a room with a view. The spectacular view from the upper level of TYC opened a whole new insight to boating conditions in the southern Puget Sound. Our meeting was followed by a luncheon.

Contestant check-in took place later in the day. That evening, we went to Totem Yacht Club for a social hour and the boat drawing. This little club went all out for us. The food, bar service, and hospitality were splendid.

The boat drawing was a blast. All of the boats were top of the line and fully equipped for cruising/racing in the great Pacific Northwest. We drew a 43-foot Ocean Alexander (raised pilothouse) named *General Quarters*. I found out that the owner was retired USAF general, and I chided him about the name of the boat and told him we only went to GQ in the Navy. I later found out that General George Babbitt was the original lead drummer for the Rock and Roll Hall of Fame group called the Ventures. The general turned out to be a most gracious host, and we enjoyed being around him. He liked to drum with his fingers, and I suppose he could have set a race pace if he wanted to.

On Thursday morning, we were joined by SDCA Vice Commodore Fred Wieder. San Diego Cruiser Association will host the NAI in 2014 at Fred's yacht club, and Fred was there to get smarter. We spent most of the morning doing boat calibrations on *General Quarters*. The afternoon was taken up by the NACA annual meeting and a skippers' meeting. We then learned that fog might be an issue at the start, and that we need to prepare separate race plans. Tacoma Yacht Club hosted a
(Continued on page 6)

NEW COMPETITORS

A quick read - "Enjoy Log Racing"
Each helpful copy is full of facts and fun.
Download for free on the NACA website:
www.predictedlog.org

EXPERIENCED PREDICTED LOGGERS

Check out "Predicted Log Essentials"
Get the competitive edge!
Download for free on the NACA website:
www.predictedlog.org

NAI 2013, According to Jeff Calabrese
(Continued from page 5)

social hour that evening. Great camaraderie, super food and drink were enjoyed by all.

Dave and I spent a good part of Friday hashing over currents and various strategies. Later that evening, we enjoyed a super meal at one of the local waterfront restaurants.

When I awoke Saturday morning, I looked out to see crystal clear skies and a beautiful sunrise. I was facing east. Had I looked the other way, I would have seen the low visibility situation that was to have a profound effect on the start of the race. Following a light breakfast (standard fare every morning at the inn), we headed for TYC and the boat.

Dense fog prevented the start of the originally-planned race. And while we were getting ready to put plan B into play, the committee told us to use plan A but skip the first two legs.

This moved our start about an hour and a half further into the morning. Our new start point was at a ferry landing. After determining that the ferry schedule would not impede us in any way, we started the race. The race itself was pretty straightforward. Visibility was great, traffic was minimal, and the marks were readily identifiable. The boat handled exceptionally well. There was current out there, but it was hardly noticeable (except for the occasional eddy) until we got into the Narrows. Here, the current was obvious and every bit of the three plus knots that we predicted.

One of the race requirements was to "...stop the boat and drift for five minutes". Following our

drift, we went back up to base speed and on to our next check point. On this leg, I had my hands full holding course while watching other traffic crabbing almost sideways in the strong current.

Fishing boats plagued us through to the finish and some seconds were lost while weaving through them. Finally over! With time tape in hand, we figured that we scored a 1.3% error. We figured wrong. At the first part of the peel-off before dinner, we were looking at fourth place.

Dinner was delicious. I had the "do as the Romans do" salmon. Following dinner, the 2014 NACA bridge was installed, and the prestigious Gandleman Trophy was awarded to Dick Timmerman. I could not think of a more deserving person. The final peel-off kept us in suspense. The defending champion came in fourth. One of the world's top log racers came in third with a 1.13%. They called the remaining two contestants to the stage and announced the contestant from Chicago as taking second with a 1.03%. Our corrected error of .98% got us first place. Way to go, David Weimer! You caught the rainbow!

I include all of North American Cruiser Association in my "hats off" to the NAI 2013 committee.

Jeff Calabrese (Humble Helmsman)
Staff Commodore
North American Cruiser Association

Contents of the boat box carried for emergency repairs by all U.S. Navy ships' boats, late 19th century:

All boats: 1 axe, 1 hatchet, 1 hammer, 1 hand-saw
Launches: in addition, 100 tacks, 3 sq ft sheet lead
First cutters: in addition, 1.5 lbs nails, 75 tacks, 3 sq ft sheet lead
All others: in addition, 1 lb nails, 50 tacks, 2 sq ft sheet lead

A ship is a living thing with feelings,
likes and dislikes, tempers and
tantrums, strengths and weaknesses.
- A. H. Rasmussen

RMS Queen Mary

12/17/2013

Best 10 of first 11 contests entered

Pos	Skipper	Vessel	Assoc.	Points	Entered	Average
1	Adalian, Garry	JONATHAN	SDCA	9015	11	902
2	Ehlers, Bob	JB & ME	SDCA	8890	11	889
3	Padgett, David	SLIP AWAY	IPBA-N	8683	11	868
4	Lindal, Bob	SUZY Q	IPBA-N	7932	10	793
5	Jackman, George	SPECIAL EFFECT	SCCA	7880	10	788
6	Cole, Fred	MOUSE TRAP	IPBA-S	7544	9	838
7	Korzetz, Jim	FREEDOM	IPBA-N	7449	9	828
8	Murphey, John	STURDY GAL	IPBA-N	7221	9	802
9	Collins, Tom	MISTY SEA	SCCA	7070	8	884
10	Henry, Mike	PEACHY KEEN	IPBA-S	6945	11	695

St. Petersburg YC Perpetual

12/17/2013

Best 4 of first 5 contests entered

Pos	Skipper	Vessel	Assoc.	Points	Entered	Average
1	Adalian, Garry	JONATHAN	SDCA	3865	5	966
2	Lentgis, Dean	KALOS FILOS	IPBA-N	3819	5	955
3	Cole, Fred	MOUSE TRAP	IPBA-S	3770	5	943
4	Hazlerig, Steve	SOLARA	IPBA-N	3739	5	935
5	Murphey, John	STURDY GAL	IPBA-N	3728	5	932
6	Jackman, George	SPECIAL EFFECT	SCCA	3612	5	903
7	Blockhus, Burnell	LOLITA	SMBPF	3598	5	900
8	Ehlers, Bob	JB & ME	SDCA	3576	5	894
9	Collins, Tom	MISTY SEA	SCCA	3574	5	894
10	Korzetz, Jim	FREEDOM	IPBA-N	3533	5	883

Herbert L. Stone Perpetual

12/17/2013

Highest points from 1st, 2nd, 3rd place finishes in first 7 contests entered

Pos	Skipper	Vessel	Assoc.	Points	Entered	Average
1	Adalian, Garry	JONATHAN	SDCA	6476	7	925
2	Collins, Tom	MISTY SEA	SCCA	6090	7	870
3	Ehlers, Bob	JB & ME	SDCA	5482	6	914
4	Blockhus, Burnell	LOLITA	SMBPF	5148	6	858
5	Jackman, George	SPECIAL EFFECT	SCCA	4488	5	898
6	Kutchma, Ed	PACIFIC PIXIE	SBCCA	3976	5	795
7	Cole, Fred	MOUSE TRAP	IPBA-S	3852	4	963
8	Lentgis, Dean	KALOS FILOS	IPBA-N	3819	4	955
9	Scheinbaum, Mickey	THREE FLAGS	SMBPF	3692	6	615
10	Winberg, Bill	BILLY THE KID	SCCA	3264	4	816

M. Codrington Perpetual

12/17/2013

Best 5 of first 7 contests entered

Pos	Skipper	Vessel	Assoc.	Points	Entered	Average
1	Adalian, Garry	JONATHAN	SDCA	4852	7	970
2	Cole, Fred	MOUSE TRAP	IPBA-S	4721	7	944
3	Ehlers, Bob	JB & ME	SDCA	4697	7	939
4	Lentgis, Dean	KALOS FILOS	IPBA-N	4591	7	918
5	Collins, Tom	MISTY SEA	SCCA	4554	7	911
6	Jackman, George	SPECIAL EFFECT	SCCA	4543	7	909
7	Blockhus, Burnell	LOLITA	SMBPF	4531	7	906
8	Korzetz, Jim	FREEDOM	IPBA-N	4524	7	905
9	Padgett, David	SLIP AWAY	IPBA-N	4459	7	892
10	Murphey, John	STURDY GAL	IPBA-N	4417	7	883

Coastal Explorer Trophy - Best 8 of First 9 Regattas Entered 12/17/13

Pos	Skipper	Vessel	Assoc.	Points	Entered	Average
1	Adalian, Garry	JONATHAN	SDCA	7288	9	911
2	Ehlers, Bob	JB & ME	SDCA	7214	9	902
3	Cole, Fred	MOUSE TRAP	IPBA-S	7168	9	896
4	Collins, Tom	MISTY SEA	SCCA	7070	8	884
5	Padgett, David	SLIP AWAY	IPBA-N	6853	9	857
6	Korzetz, Jim	FREEDOM	IPBA-N	6802	9	850
7	Jackman, George	SPECIAL EFFECT	SCCA	6697	9	837
8	Murphey, John	STURDY GAL	IPBA-N	6677	9	835
9	Lindal, Bob	SUZY Q	IPBA-N	6426	9	803
10	Blockhus, Burnell	LOLITA	SMBPF	6356	8	795
11	Winberg, Bill	BILLY THE KID	SCCA	6017	9	752
12	Salerno, Ralph	ANCORA	SDCA	5843	9	730
13	Walker, John	PRIME TIME	SCCA	5828	8	729
14	Lentgis, Dean	KALOS FILOS	IPBA-N	5786	7	827
15	Loneragan, James	CASA DEL PERRO DOS	SDCA	5653	9	707
16	Scheinbaum, Mickey	THREE FLAGS	SMBPF	5631	9	704
17	Denaci, Edward	MICROSHIP II	SDCA	5623	9	703
18	Klett/Elbon Team	KLETTITAT	IPBA-N	5466	7	781
19	Henry, Mike	PEACHY KEEN	IPBA-S	5451	9	681
20	Hazlerig, Steve	SOLARA	IPBA-N	5427	7	775
21	Weimer, David	JUST DESERTS	SDCA	5147	8	643
22	Cullen, Bruce	CAROLINE II	IPBA-N	5110	7	730
23	Anderson, Jim	FIDALGO	IPBA-S	5071	8	634
24	Babbitt, George	GENERAL QUARTERS	IPBA-S	5068	8	634
25	Erly, Robert	LOIS	SDCA	4892	9	612
26	Chapin, Clint	SOJOURN	IPBA-N	4798	8	600
27	Calabrese, Jeff	LIVING WELL	SDCA	4529	9	566
28	Irwin, Chuck	LAUGHIN' PLACE	IPBA-S	4286	7	612
29	Griffing, Ken	LOON'S CALL	SCCA	4054	8	507
30	Anderson, Bill	THE TILLIE	IPBA-N	4045	6	674
31	Kutchma, Ed	PACIFIC PIXIE	SBCCA	3976	5	795
32	Godfrey, Bob	UNREEL	SMBPF	3820	7	546
33	Larson, Don	TEWASI	IPBA-S	3482	6	580
34	Dean, Richard	CHESTNUT NECK	SCCA	3451	4	863
35	Muir, Marty	KACHINA	SDCA	3420	5	684
36	Frank, Dan	MOON SHINE	IPBA-N	3419	6	570
37	Chandler, Tom	RM II HYDE	SCCA	3259	6	543
38	Fontaine, Michael	TUFFY	SDCA	3132	9	392
39	Burwell, John	GAVIA	IPBA-S	3120	5	624
40	Subert, Tim	BEACH MUSIC	IPBA-N	3094	7	442
41	Weider, Fred	WOS IST LOS	SDCA	3010	8	376
42	Brooke, Tom	OVEREXPOSURE	IPBA-N	2897	4	724
43	McCormick, Bill	INAMORATA	SCCA	2896	4	724
44	Green, Sheri	IT'LL DO	SBCCA	2705	4	676
45	Cox, Ivan	VOYAGER	SBCCA	2689	5	538
46	Williamson, Chris	KNOT BEHAVIN	IPBA-S	2657	5	531
47	Terris, Gerry	MUTUAL FUN	SCCA	2594	7	371
48	Downer, Jerry	NOR' WESTER	IPBA-S	2593	4	648
49	Brett, Steve	OCEAN JEWEL	IPBA-S	2584	5	517
50	Smith, Terynia	PATTY WAGON	IPBA-N	2490	4	623
51	Creighton, Daryl	FREE SPIRIT	SCCA	2318	5	464
52	Voight, Ken	HERITAGE	SCCA	2316	6	386
53	Ritter, Owen	OUTBOUND	IPBA-S	2197	3	732
54	VanAntwerp, Jim	SARA B	IPBA-S	2114	4	529
55	Lorenz, Alex	TIRELESS	IPBA-N	2026	3	675

Coastal Explorer Trophy - Best 8 of First 9 Regattas Entered 12/17/13

Pos	Skipper	Vessel	Assoc.	Points	Entered	Average
56	Grady, Bill	ZORRO	IPBA-N	1928	2	964
57	Lawson, J & D Braun	KISS	SBCCA	1854	4	464
58	Elovitz, Michael	LOVIT	SDCA	1832	3	611
59	Ryan, Glenn	AMNESIA	IPBA-N	1686	2	843
60	Herman, Bill	SUMMER HOURS	IPBA-N	1662	2	831
61	Clinkenbeard, Bruce	OLDER BUDWEISER	SCCA	1613	4	403
62	Corbin, Chip	SOLARA B	IPBA-N	1453	2	727
63	Findley, Bill	ANOTHER PROMISE	SCCA	1427	2	714
64	Ripley, Tom	BELIEVE IT OR NOT	IPBA-N	1304	3	435
65	Strandjord, Scott	REDEMPTION	IPBA-N	1284	2	642
66	Bagley, George	DELTA DANCER	IPBA-N	1270	2	635
67	Sheehan, Dennis	NAUTI GAL	IPBA-N	1174	2	587
68	Martin, Michael	HELMS DEEP	IPBA-N	1127	2	564
69	Watson, Val	PHANTOM	IPBA-S	1090	3	363
70	Adair, John	PACIFIC STAR	IPBA-S	1076	2	538
71	Decock, Don	NIFTY FIFTY	IPBA-N	1075	2	538
72	Rutten, Barry	SALTY	IPBA-N	1038	2	519
73	McGough, Maurice	QUOTIDIAN	SPYC	1036	2	518
74	Sevarge, Bill	SISSY DOLL	IPBA-N	1014	2	507
75	Silvernail, Chuck	SOLMAR	IPBA-S	996	1	996
76	Cyprus, Kip	KISMET	SCCA	988	1	988
77	Bennison, Dick	WELL DONE	IPBA-S	969	2	485
78	Dunwoody, Colin	SNAFU TOO	IPBA-GG	965	1	965
79	Luvchuk, Mike	AMORE CHARLES	SPYC	965	1	965
80	Coleman, John	KING KONCH	SPYC	954	1	954
81	Myers, Mike	VAMOOSSE	SCCA	927	2	464
82	Veres, Jim	VAGABOND JIM	IPBA-N	869	1	869
83	Delaney, Craig	GIOVANNA	SCCA	816	1	816
84	Baynard, Fay	PHASE OUT	SPYC	799	1	799
85	Nelson, James	SAMMY JO	IPBA-GG	799	1	799
86	Dixson, Rich	TEAKLESS IN SEATTLE	IPBA-N	781	2	391
87	Paxton, Gene	EVENTIDE	IPBA-S	770	1	770
88	Case, Dave	TANGO-RUMBA	IPBA-N	700	1	700
89	Golden, Tom	DIONYSUS	SCCA	688	1	688
90	Bruins, Rob	OCEAN PEARL	IPBA-S	657	1	657
91	Osterli, Phil	NORDIC SPIRIT	IPBA-N	645	1	645
92	Rozak, Kenny	KEE RA	SCCA	644	1	644
93	Doherty, Bill	ALDEBARAN	SDCA	641	1	641
94	Nicholson, Jim	HAVEN II	IPBA-GG	633	1	633
95	Weller, Heber	STEELE 'N' AWAY	SPYC	633	1	633
96	Mitchell, Jim	PENALTY BOX	IPBA-N	621	2	311
97	Gregg, George	NOBLE	IPBA-N	600	2	300
98	Backstrom, Mark	SEABOOPLAY	IPBA-N	595	1	595
99	Norman, John	WHITE SHARK	SCCA	591	1	591
100	Perry, Corky	PEACHY KEEN-Perry	IPBA-S	563	1	563
101	Harlow, Mark	R & R	IPBA-S	528	1	528
102	Pieretti, Loretta	SISSY DOLL	IPBA-N	522	1	522
103	Larson, Kent	DEBIT CARD	SPYC	518	1	518
104	Smith, Reed	FINDANGO	IPBA-N	511	1	511
105	Lunceford, Ryan	PICKLE	IPBA-S	507	1	507
106	Swan, Jeff	CLAIRE MARIE	IPBA-S	497	1	497
107	Munroe, Mark	ROMIDA	SCCA	494	1	494
108	Miller, David	SEA NYMPH II B	IPBA-S	488	1	488
109	Whiteley, Bill	LEGACY	IPBA-N	487	1	487
110	Chapman, Roy	BLUE EYES	SPYC	466	1	466

Coastal Explorer Trophy - Best 8 of First 9 Regattas Entered

12/17/13

Pos	Skipper	Vessel	Assoc.	Points	Entered	Average
111	Gautshci, Bob	SIRENA	IPBA-GG	466	1	466
112	Rodgers, John	NIRVANA	IPBA-N	458	1	458
113	Baker, Pat	CHOPPERS II	IPBA-N	454	1	454
114	Johnson, Bart	LIL' TROOPER	IPBA-N	448	1	448
115	Curtis Team 2	LAUGHIN' PLACE B	IPBA-S	446	1	446
116	Dawes, Dan	HELEN PAULINE	SCCA	438	1	438
117	Abell, Greg	SEABELL	IPBA-N	426	1	426
118	McNeil, Seth	YANKEE CLIPPER	IPBA-S	413	1	413
119	Sears, Dave	SALT SHAKER	IPBA-N	411	1	411
120	Burton, Mike	ROYAL CHINOOK	IPBA-S	409	1	409
121	Baker, Terry	CHOPPERS II	IPBA-N	405	1	405
122	Atton, John	SOMEDAY	SCCA	392	1	392
123	Curtis Team 1	KNOT BEHAVIN B	IPBA-S	373	1	373
124	Bernard, Don	SOMEDAY'S HERE	SCCA	357	1	357
125	Thomas, Willard	SEA LIFE	IPBA-S	356	1	356
126	Naselow, Ron	TRIVIAL PURSUIT	IPBA-N	342	1	342
127	Chunn, Barry	IMAGINE	IPBA-S	336	1	336
128	Dion, Tom	JOINT VENTURE	IPBA-S	319	1	319
129	Carrosino, John	RENDEZVOUS	IPBA-N	300	1	300
130	Judd, Biff	BAREFOOTIN'	SPYC	300	1	300
131	Kohler, Kevin	EAGLE	IPBA-S	300	1	300
132	McCallam	no name	IPBA-GG	300	1	300
133	Wellnitz, Jerry	VENTANA	SDCA	300	1	300
134	Wheeler, Bob	CAROUSEL	IPBA-S	300	1	300

North American Cruiser Association - 500 Club

NACA #	Contestant	Assoc.	Date	Contest	% ERROR
755	George Jackman	SCCA	3/02/2013	Season Opener	0.4410
984	Steve Hazlerig	IPBA-N	3/23/2013	Boomerang	0.4529
800	Garry Adalian	SDCA	3/16/2013	March 16	0.2981
800	Garry Adalian	SDCA	5/18/2013	Harbor 1 of 4	0.4238
755	George Jackman	SCCA	5/31/2013	Sharkie	0.2320
1008	Bill Winberg	SCCA	8/16/2013	Del Mar	0.4020
755	George Jackman	SCCA	8/16/2013	Del Mar	0.4890
20	Tom Collins	SCCA	8/16/2013	Del Mar	0.4910
1008	Bill Winberg	SCCA	9/13/2013	Tom Scott	0.3680
834	John Walker	SCCA	9/13/2013	Tom Scott	0.3940
20	Tom Collins	SCCA	9/13/2013	Tom Scott	0.4510
755	George Jackman	SCCA	9/13/2013	Tom Scott	0.4940
20	Tom Collins	SCCA	9/14/2013	Ramsey	0.2830

NACA BLAZER BULLIONS

NACA has gold embroidered blazer bullions with our flag on a gilt-edged 2 1/2" medallion.

Really good looking!

Only \$25 (includes shipping and handling)

Call Bob Ehlers

619.222.9446

NACA FLAGS

NACA flags are available for purchase.

Show off your membership in NACA.

Only \$25.00 each.

Call Bob Ehlers

619.222.9446



Encourage a friend to join the North American Cruiser Association...*Today!*

Membership in NACA keeps everyone who is interested in predicted logging well-informed about the sport throughout North America. Skippers from member associations compete for North American trophies simply by entering their local contests. The champion from each organization is invited to compete in the North American Invitational, hosted by a different NACA organization each year.

For your annual dues of \$10, a print copy of each issue of *Cruiser Log* and the annual roster will be mailed to you.

Complete this form to join or renew membership in the North American Cruiser Association:

Name: _____

Address: _____

City: _____ State: _____ Zip Code: _____

Spouse Name: _____ Boat Name: _____

E-mail: _____

Home Telephone: _____

Office Telephone: _____

Boat/Cell Phone: _____

Other Boating Organizations: _____

ANNUAL DUES: \$ 10.00

CONTRIBUTION*: \$ _____

TOTAL ENCLOSED:\$ _____

** Donations are appreciated and help to support promotion of our sport and a quality trophy program. Your contribution will help keep the dues low and provide much needed support.*

Mail with your check payable to North American Cruiser Association to:

Bob Ehlers, Executive Secretary
1135 Alexandria Drive
San Diego, CA 92107



Cruiser Log

The Newsletter of North American Cruiser Association

Bob Ehlers, Acting Executive Secretary
1135 Alexandria Drive
San Diego, CA 92107



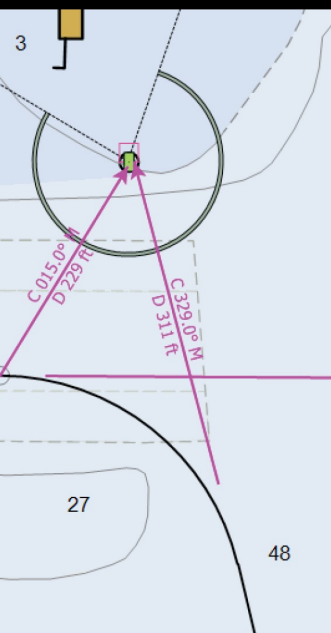
Get Serious!

With the only navigation software that includes features designed specifically for Predicted Log Racing

COASTAL EXPLORER

Navigation Software keeps getting better and better!

NACA competitors have been using Coastal Explorer to plan and win events for nearly 10 years. Our exclusive curved waypoint transition is just one of the many tools that can be used to accurately plan for a race. Routes can be easily copied to MS Excel for further refinement. These features combined with Coastal Explorer's ease of use and stability make it the ideal choice for your next race and all your cruising needs.



ROSE POINT
NAVIGATION SYSTEMS

Visit www.rosepointnav.com for more information and to download a 10 day free trial. 20% discount for NACA members